

SCALA2

End-of-Life Information

Grundfos SCALA2 must be disposed of according to local regulations by using a public or private waste collection service. If this is not possible, contact the nearest Grundfos company or service workshop.

Safety risks

- Safety risk related to materials used

There is no safety risk to people during the disassembly process posed by the materials used in the product
It's recommended to empty the pump for water before starting dismantle

- Safety risk related to handling the product

Care should be taken when handling the motor due to the weight.
The bearings will include non-toxic grease, and inside there may be remembrance of non-toxic lubrication for assembly.
It is recommended to avoid contact to the heat paste between the heatsink and PCB, it is not dangerous or toxic, just unpleasant and difficult to get rid of again

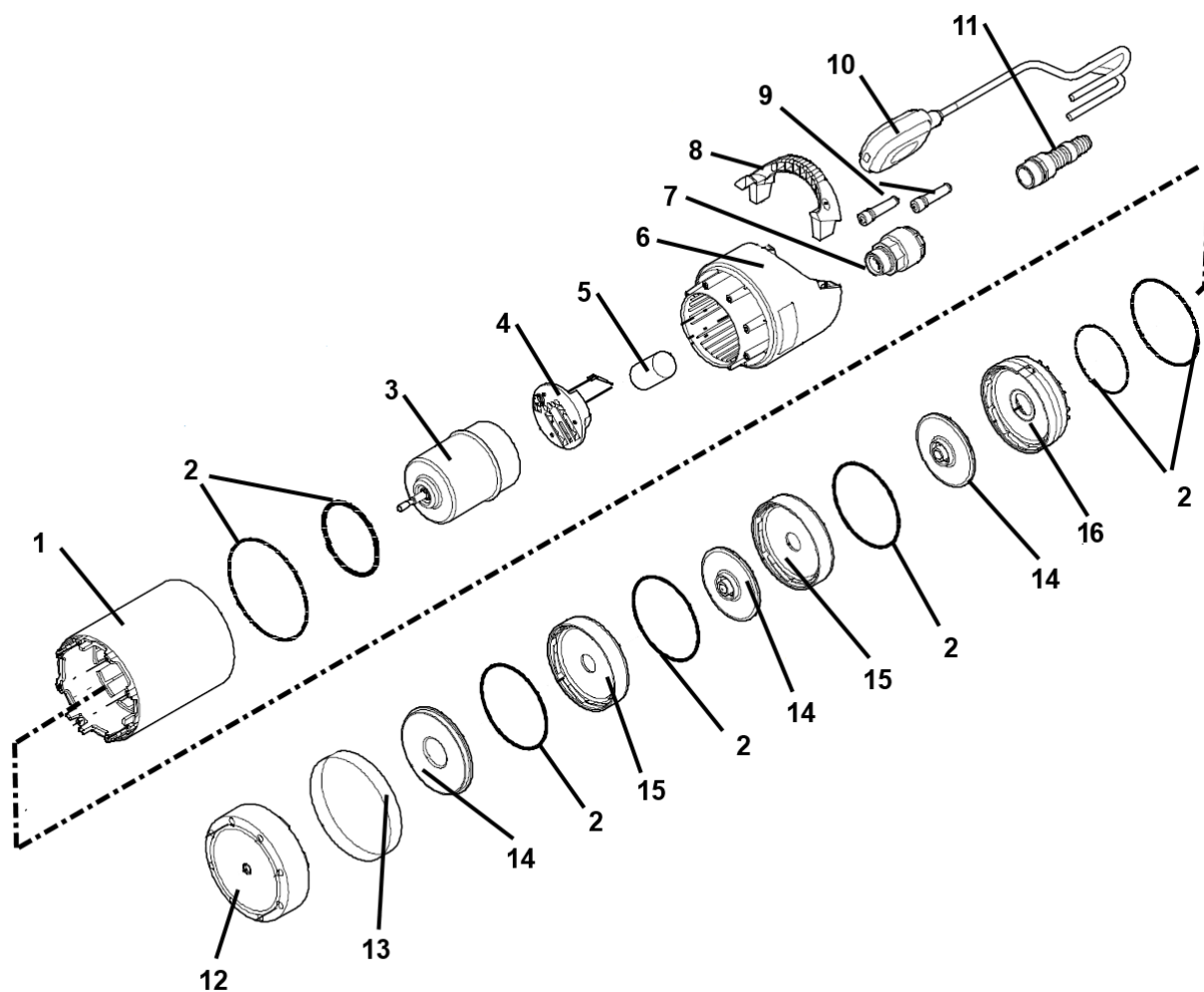
Disassembly of the product

The main materials of the components are:

- Copper
- Iron
- Aluminium
- Electronic scrap
- Composite materials

and can therefore be recycled to a large extent – depending on the national possibilities for recycling

Detailed description of disassembly can be found in the service instructions, please see [link](#)



Pos. No.	Designation	Material	Special disassembly considerations
1	Combined pump and Stator house with motor	Aluminium, PPE+PS-GF30, EPDM, EN 1.4301 / AISI304, EN 1.4401	Use two 12 mm flatbed screwdrivers to pull out the pump housing and hydraulics. Shaft, rotor and bearings can be pulled out by hand after the pump house have been removed
2	Control box cover	PC-GF10	
3	Pump cover	PC-GF10	
4	Shaft seal	EN 1.4301, EN 1.4401, EPDM, Hilox 961, CY103	
5	Chamber stack	PPE+PS-GF30, EN 1.4301, TPU, PBT	
9	Non-return valve	EN 1.4310, POM, EPDM, EN 1.4308, PPE+PS-GF30	

10	Pressure tank complete	PPE+PS-GF30, Butyl	
11	Connection part	PPE+PS-GF30	
19	Drain plug	PPE+PS-GF30	
22	Connection ports	PPE+PS-GF30	
24	Non-return valve, inlet	EN 1.4310, POM, EPDM, EN 1.4308, PPE+PS-GF30	
Additional materials:			